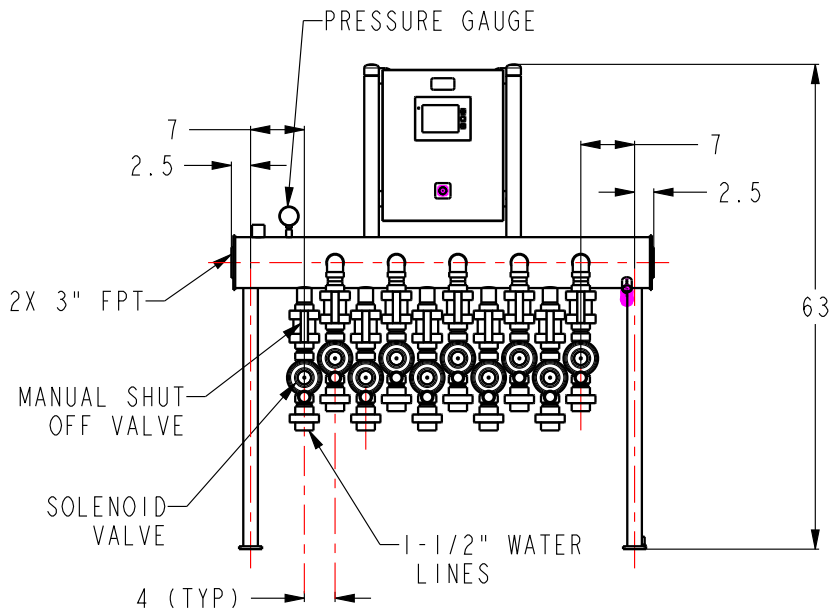
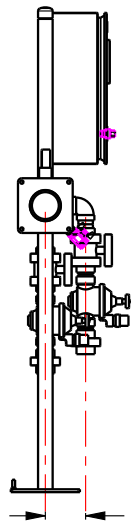
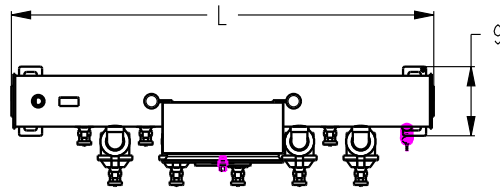
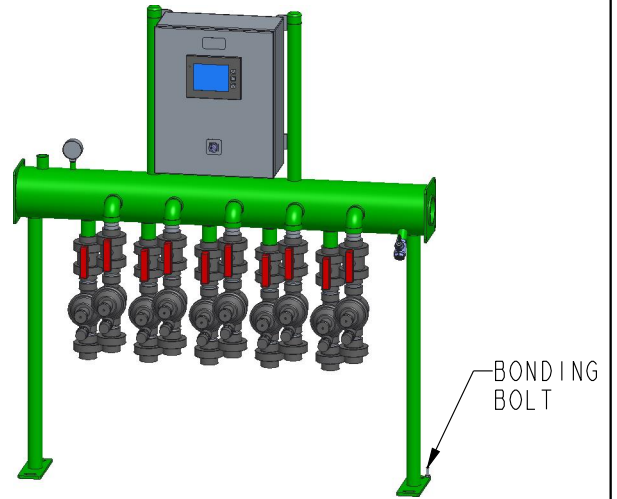


MODEL NO	NUMBER OF VALVES	L
03066-01-04	4	31
03066-01-05	5	35
03066-01-06	6	49
03066-01-07	7	43
03066-01-08	8	47
03066-01-09	9	51
03066-01-10	10	55
03066-01-11	11	59
03066-01-12	12	63
03066-01-13	13	67
03066-01-14	14	71
03066-01-15	15	75
03066-01-16	16	79
03066-01-17	17	83
03066-01-18	18	87
03066-01-19	19	91
03066-01-20	20	95
03066-01-21	21	99
03066-01-22	22	103



MANIFOLD SPECS:

- 1- MANIFOLDS SHALL BE BUILT FROM 6.625 INCH DIAMETER 304 STAINLESS STEEL PIPE.
- 2- MANIFOLD MAY BE POWDER COATED FOR FURTHER PROTECTION.
- 3- ALL SOLENOID VALVE LINES SHALL HAVE A TRUE UNION FITTING ON BOTH ENDS
- 4- MANIFOLD FITTINGS AND VALES SHALL BE MADE OF SCH 80 PVC.

**NIRBO  
AQUATIC INC.**

ALL INFORMATION CONTAINED  
IN THIS DOCUMENT IS PROPERTY  
OF NIRBO AQUATIC INC. AND  
MAY NOT BE REPRODUCED OR  
COMMUNICATED WITHOUT  
PERMISSION IN WRITING FROM  
NIRBO AQUATIC INC.

DATE  
(yyyy.mm.dd)  
2020.05.24

MANIFOLD, COMPACT

UNIT  
INCH

SHEET

DRAWING NO

REV

1 / 1

03066-04-XX-D02

01