



SAMPLE PARK-12 SPLASH PAD PROPOSAL

Nirbo Aquatic Inc.

January, 2016





Sample Park 12 Splash Pad (Rendering 1) | 19001-12-Revision 01





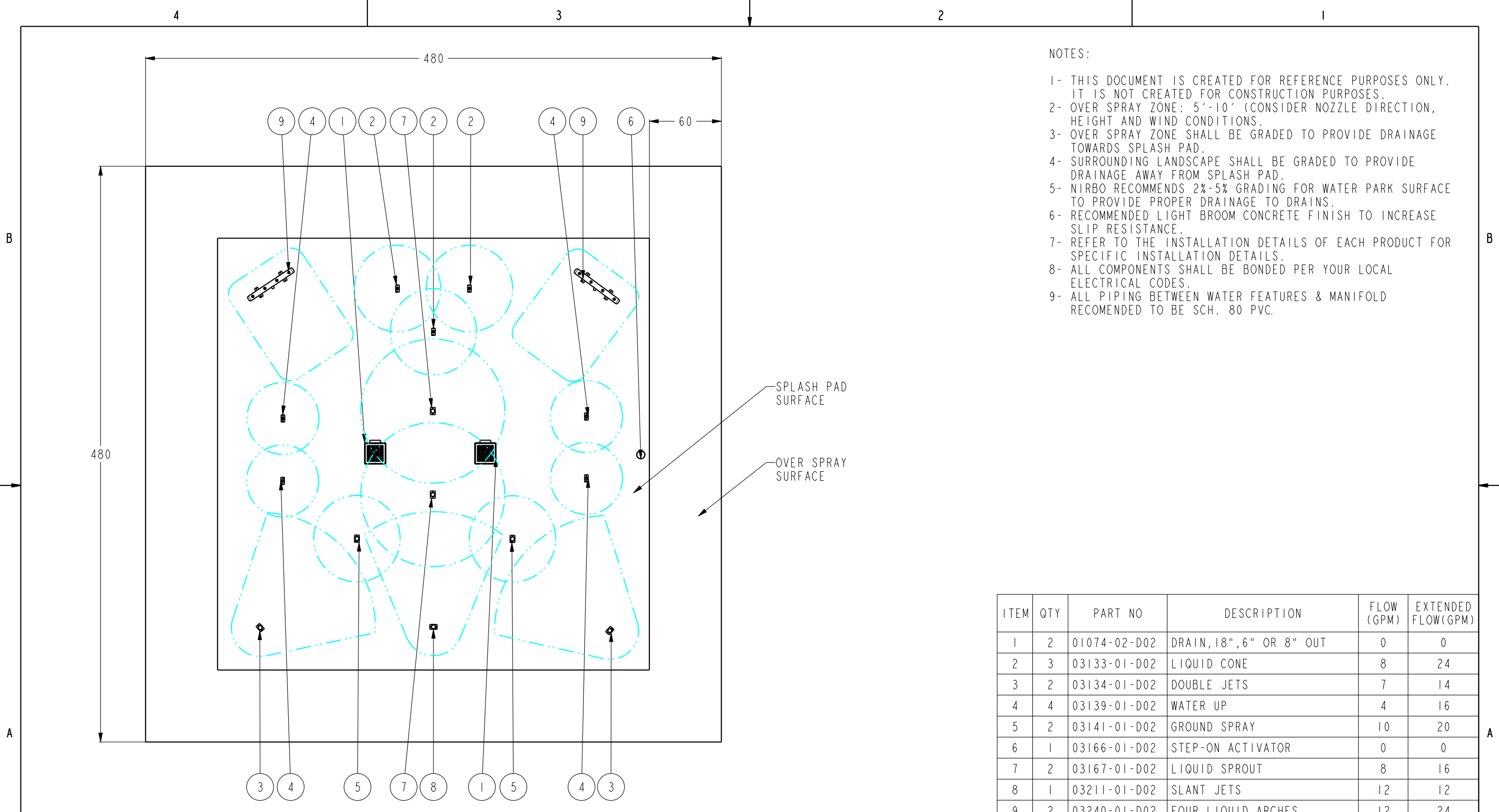
Sample Park 12 Splash Pad (Rendering 2) | 19001-12-Revision 01





Sample Park 12 Splash Pad (Rendering 3) | 19001-12-Revision 01





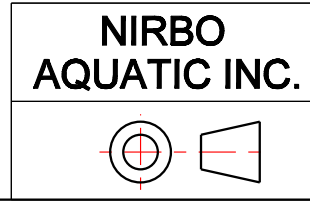
NOTES:

- 1- THIS DOCUMENT IS CREATED FOR REFERENCE PURPOSES ONLY. IT IS NOT CREATED FOR CONSTRUCTION PURPOSES.
- 2- OVER SPRAY ZONE: 5'-10' (CONSIDER NOZZLE DIRECTION, HEIGHT AND WIND CONDITIONS).
- 3- OVER SPRAY ZONE SHALL BE GRADED TO PROVIDE DRAINAGE TOWARDS SPLASH PAD.
- 4- SURROUNDING LANDSCAPE SHALL BE GRADED TO PROVIDE DRAINAGE AWAY FROM SPLASH PAD.
- 5- NIRBO RECOMMENDS 2%-5% GRADING FOR WATER PARK SURFACE TO PROVIDE PROPER DRAINAGE TO DRAINS.
- 6- RECOMMENDED LIGHT BROOM CONCRETE FINISH TO INCREASE SLIP RESISTANCE.
- 7- REFER TO THE INSTALLATION DETAILS OF EACH PRODUCT FOR SPECIFIC INSTALLATION DETAILS.
- 8- ALL COMPONENTS SHALL BE BONDED PER YOUR LOCAL ELECTRICAL CODES.
- 9- ALL PIPING BETWEEN WATER FEATURES & MANIFOLD RECOMMENDED TO BE SCH. 80 PVC.

ITEM	QTY	PART NO	DESCRIPTION	FLOW (GPM)	EXTENDED FLOW (GPM)
1	2	01074-02-D02	DRAIN, 18", 6" OR 8" OUT	0	0
2	3	03133-01-D02	LIQUID CONE	8	24
3	2	03134-01-D02	DOUBLE JETS	7	14
4	4	03139-01-D02	WATER UP	4	16
5	2	03141-01-D02	GROUND SPRAY	10	20
6	1	03166-01-D02	STEP-ON ACTIVATOR	0	0
7	2	03167-01-D02	LIQUID SPROUT	8	16
8	1	03211-01-D02	SLANT JETS	12	12
9	2	03240-01-D02	FOUR LIQUID ARCHES	12	24
TOTAL FLOW					126

SCALE 1:75

- NOTES:
- 1- TOTAL AREA INCLUDING OVER SPRAY ZONE: 1600 SQR FT, SPLASH PAD AREA: 900 SQR FT
 - 2- APPROXIMATE PIPE LENGTH: 700 FT (ASSUMPTION; MANIFOLD 10 FT AWAY FROM SPLASH PAD EDGE)



ALL INFORMATION CONTAINED IN THIS DOCUMENT IS PROPERTY OF NIRBO AQUATIC INC. AND MAY NOT BE REPRODUCED OR COMMUNICATED WITHOUT PERMISSION IN WRITING FROM NIRBO AQUATIC INC.

DATE (yyyy.mm.dd)	SPLASH PAD		
2020.01.27	SHEET	DRAWING NO	REV
INCH	1/1	19001-12-D02	01